



# FRESNO

## SERIES CT100 CHEMIGATION CHECK VALVE

### TECHNICAL DATA SHEET



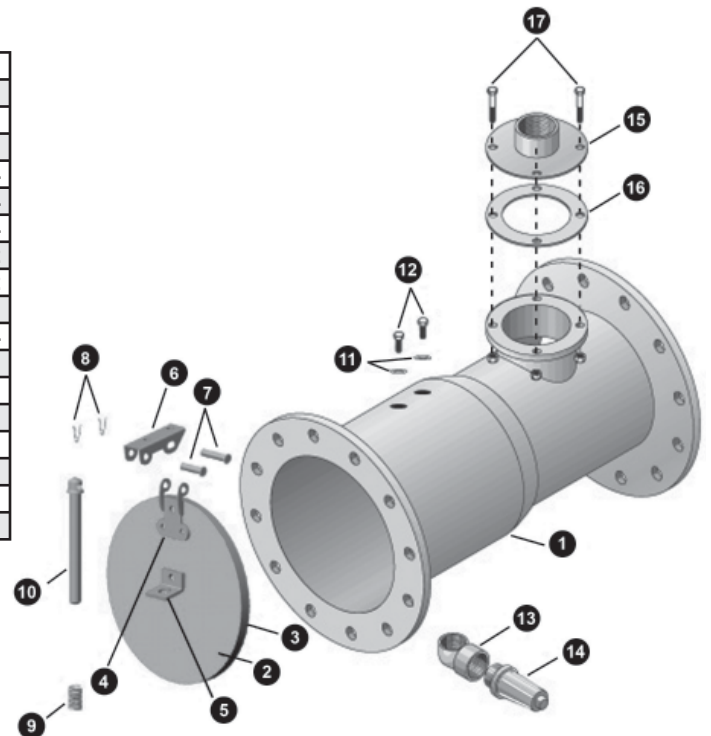
**Series CT100  
Chemigation Check Valve**

#### Features

- Durable fabricated steel body.
- Simple & economic design.
- Flanged ends for easy installation.
- Inspection port provides easy access to internal components.
- Stainless steel hinge construction for added corrosion resistance.
- Precision machined seat & rubber coated cover provide positive seal.
- Available with epoxy coated steel or galvanized steel body.

#### Material Specifications

Item	Description	Material	Specification
1	Body	Carbon Steel	A36 & A519
2	Cover Disc	Carbon Steel (Plated)	A36
3	Cover Seal	SBR Compound	D2000
4	Cover Hinge	Stainless Steel	A240, Type 304
5	Spring Brkt	Stainless Steel	A240, Type 304
6	Hinge Brkt	Stainless Steel	A240, Type 304
7	Hinge Pins	Stainless Steel	A276, Type 302
8	Hairpin Clips	Stainless Steel	A276, Type 302
9	Spring	Stainless Steel	A313 & A380
10	Spring Guide Rod	Stainless Steel	A276, Type 304
11	Seal Washer	Stainless Steel	A593 & A594
12	Mounting Bolts	Stainless Steel	A593 & A594
13	Reducing Elbow	Carbon Steel	-
14	Drain Valve	Plastic	-
15	Inspection Port Cover	Carbon Steel	A36
16	Gasket	Neoprene	D2000
17	Fasteners	Carbon Steel (Plated)	A307 & A164



#### Applications

The Series CT100 Chemigation Check Valve is designed for use on the discharge end of pipes to prevent the backflow or intrusion of water into the supply line. This valve is specially designed to prevent backflow of chemically treated water from irrigation systems.

# SPECIFICATIONS

## SERIES CT100 CCHEMIGATION CHECK VALVE

### Pressure Rating

Rated for working pressure up to 150 psi.

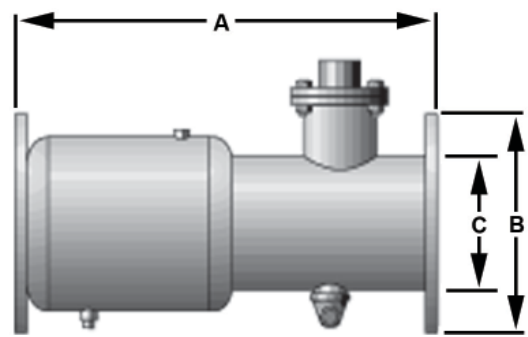
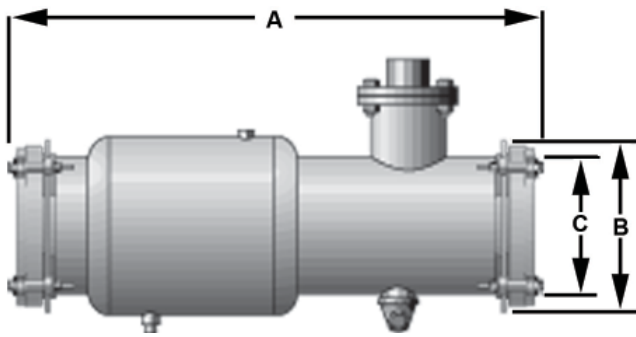
### Installation

The Model CT100 Chemigation Check Valve is designed for installation between standard 125/150 lb. steel flanges. Flanges should be properly aligned and spaced to ensure proper sealing and valve operations.

The Model CT100 Chemigation Check Valve is designed for installation with plain end pipe. Coupler ends should be tightened evenly to ensure proper seal.

### Options

Available in flanged and O.D. and I.D. compression coupler ends. Weld-on and other special end configurations available upon request. Available with galvanized steel or epoxy coated body.



### Dimensional Information

Valve Size (inches)	Dimensions (Inches)							
	Model CT100A							
	Weight	A	B	C	Weight	A	B	C
3	34.0	21.0	7.50	3.57	34.0	21.00	3.00	3.00
4	34.0	21.0	9.00	4.57	34.0	21.00	4.00	4.00
5	35.0	22.0	10.00	5.66	35.0	21.00	5.00	5.00
6	38.0	24.0	11.00	6.72	38.0	22.00	6.00	6.00
8	88.0	28.0	13.50	8.72	88.0	24.00	8.00	8.00
10	105.0		16.00	10.88	105.0	28.00	10.00	10.00
12	155.0	32.0	19.00	12.00	155.0	35.00	12.00	12.00



**FRESNO**  
Valves & Castings, Inc.

Specifications subject to change without notice.

Fresno Valves & Castings, Inc.  
7736 East Springfield Avenue  
P.O. Box 40, Selma, CA 93662, U.S.A.  
(800) 333-1658  
www.fresnovalves.com

Sheet No. CT100-2/05